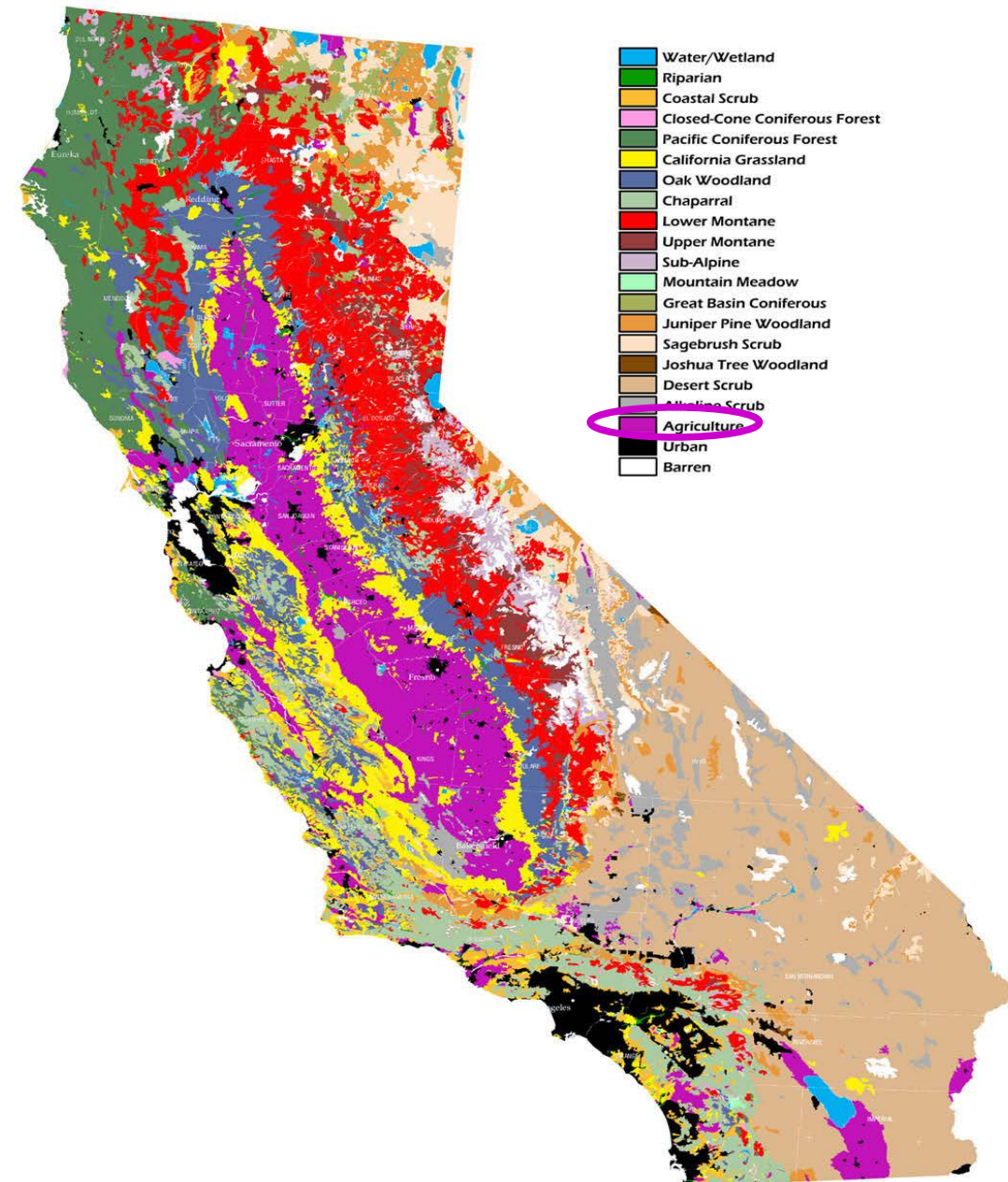
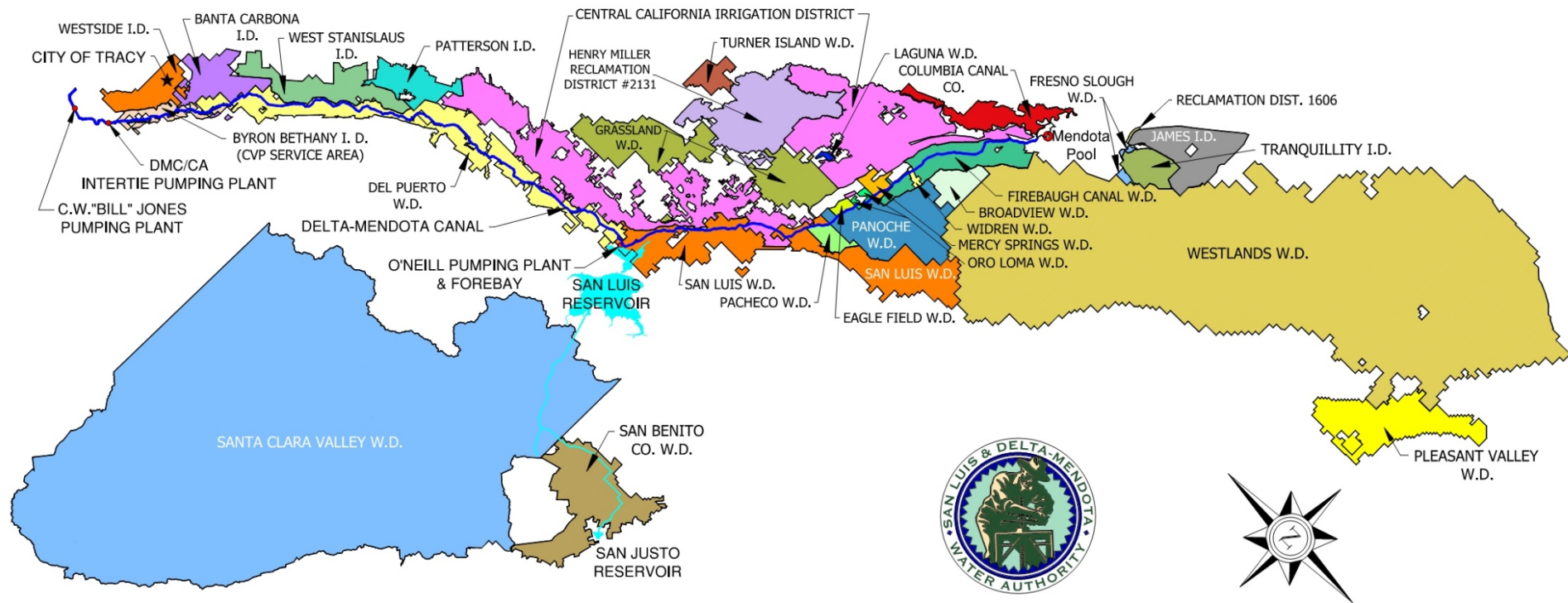


## California has a variety of climate and land use zones

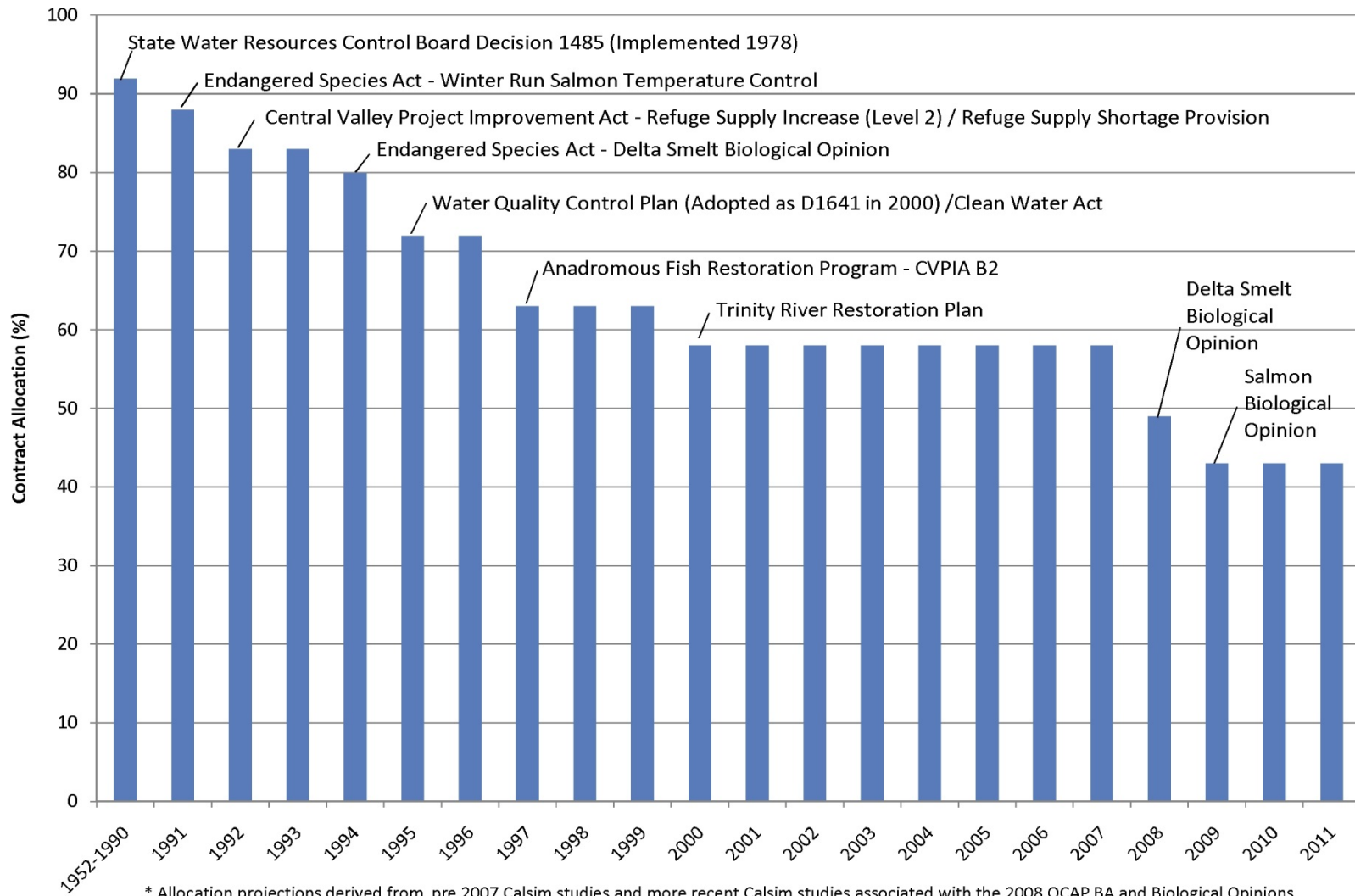
- Natural diversity allows diverse agriculture to thrive
- A relatively small share of the total land mass is suitable for high-productivity irrigated crops





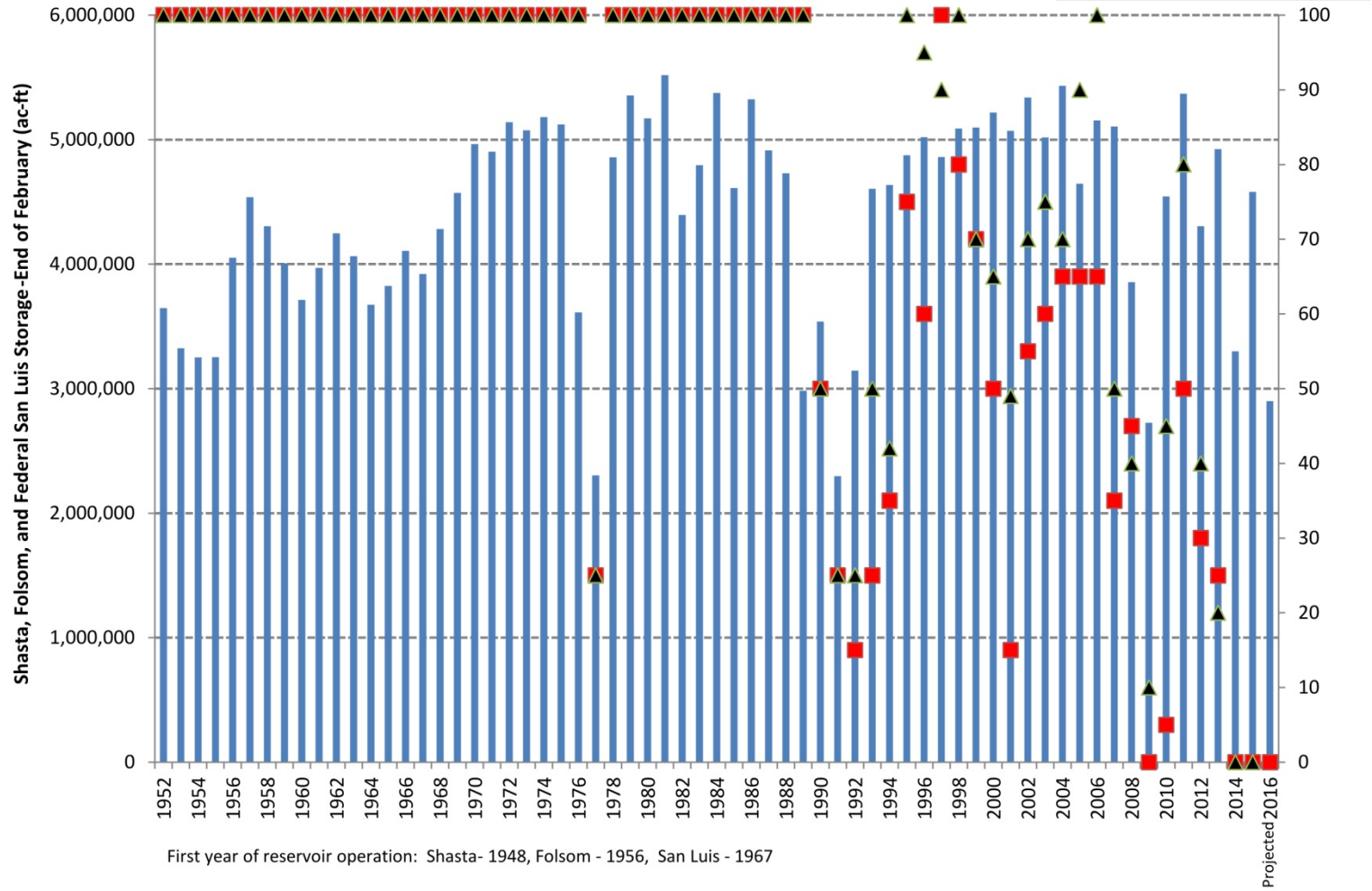
# SAN LUIS & DELTA-MENDOTA WATER AUTHORITY MEMBER AGENCIES

## Long Term Average, CVP S. of Delta Ag Service Contract Allocation

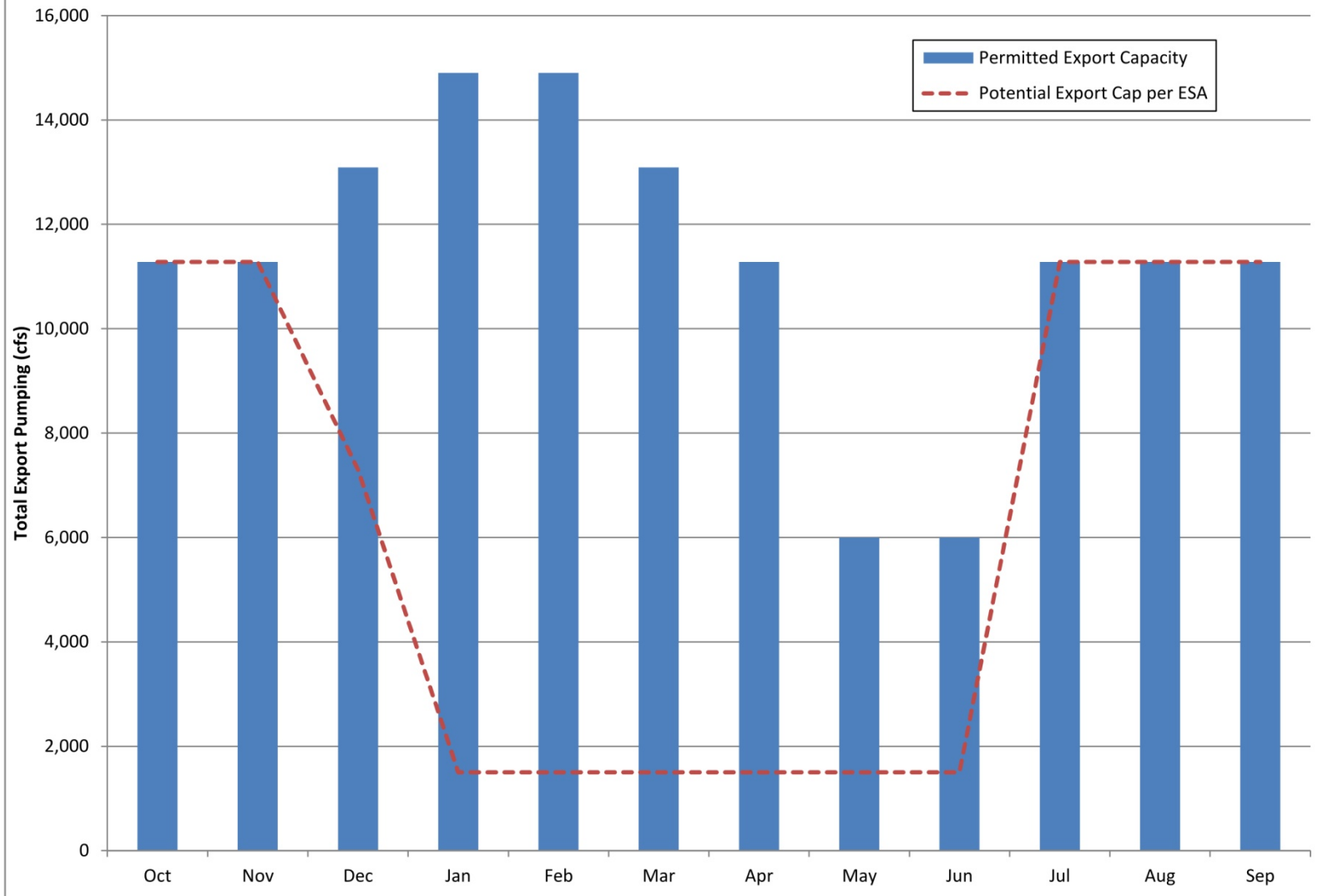


\* Allocation projections derived from pre 2007 Calsim studies and more recent Calsim studies associated with the 2008 OCAP BA and Biological Opinions

# CVP Storage vs Ag Service Allocation (1952-2016)

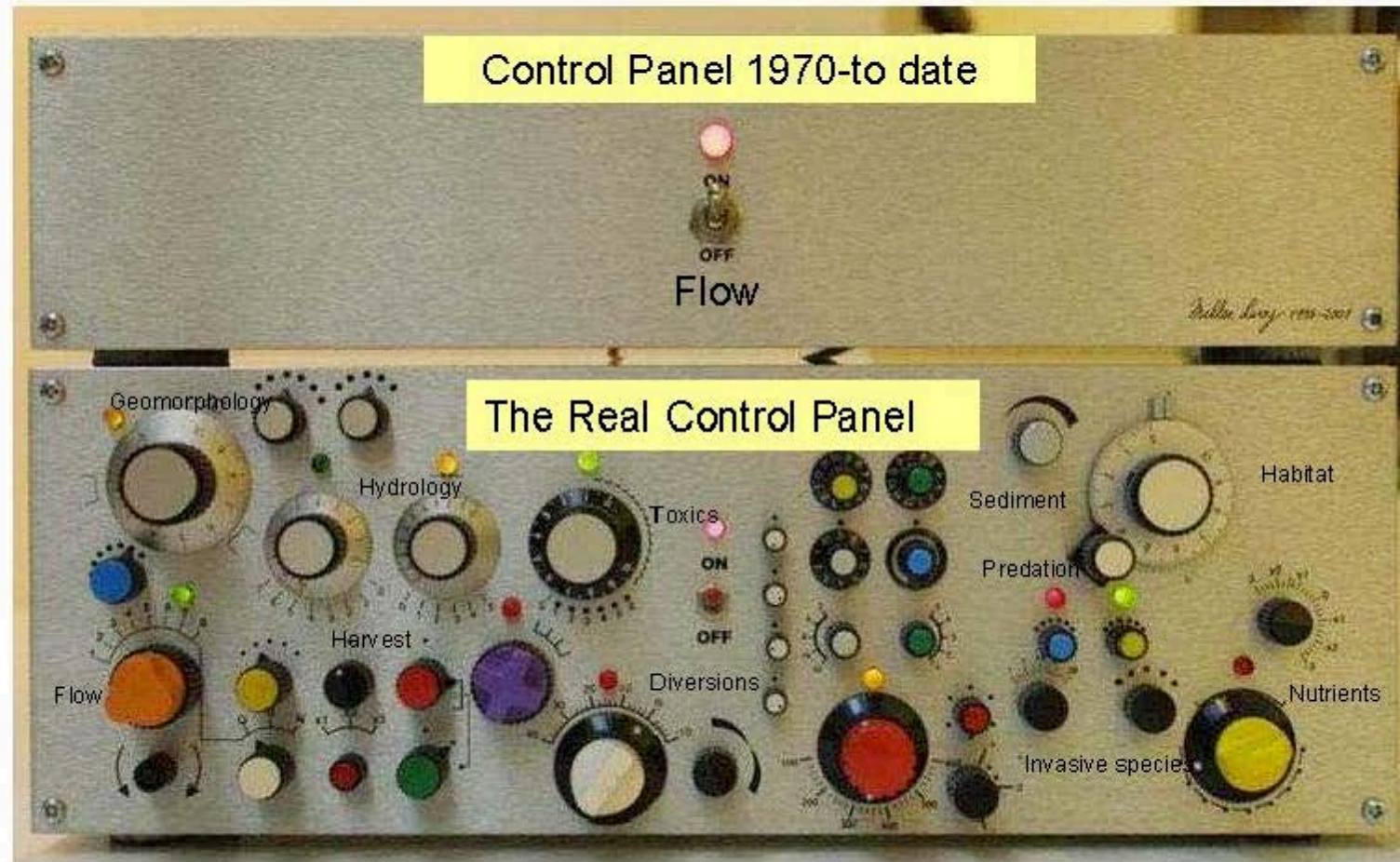


### Export Capacity vs ESA Restriction Periods





# Delta Ecosystem Management



From the 9<sup>th</sup> Circuit Decision, which overturned Wanger ESA ruling in the Delta Smelt case. Life in a D- world.

“[T]he BiOp is a bit of a mess. And not just a little bit of a mess, but, at more than 400 pages, a big bit of a mess. And the FWS knew it.”

“The BiOp is a jumble of disjointed facts and analyses.”

“It is a ponderous, chaotic document, overwhelming in size, and without the kinds of signposts and roadmaps that even trained, intelligent readers need in order to follow the agency’s reasoning.”

20 years of a regulatory regime grounded in reallocating water from human uses to environmental purposes in the name of improving the health of the ecosystem and fishery populations is a failed enterprise.

There are no fisheries data or environmental indicators which show any positive or desired response.